



# COMPANY PROFILE

2019

## The MCC PETROLEUM Group in Brief



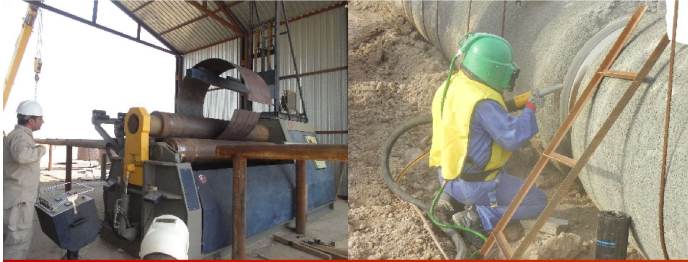
**ARCHS GROUP**

Iraqi Construction Company with Strong Financial Resources



EPC Constructor Experienced in Tank and Pipeline  
Construction

# INTRODUCTION



MCC Petroleum is a world-class Engineering, Procurement, Construction (EPC) Oil and Gas company based in UAE. We are TUV ISO 9001:2008, ISO 14001:2014 and OHSAS 18001:2007 certified in ENGINEERING, PROCUREMENT, PIPELINE, TANK CONSTRUCTION AND ASSOCIATED FACILITY, CROSSING.

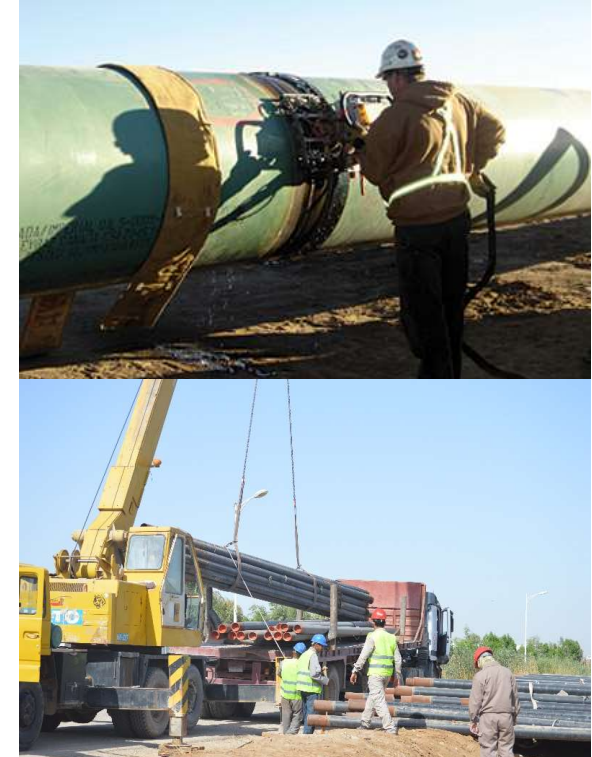
MCC Petroleum is an indigenous multi - discipline Oil field solutions provider operating under international standards while continuously raising the benchmark of customer satisfaction.

The key to our success is the combination of experienced expatriates with predominant local execution staff.

Our vision - to become a leading provider of oil field services across the Middle East.



Over  
1,000 employees  
in the Group





# HISTORY



The origin of the MCC Petroleum Group dates back to 1986 when the Company started operations in the United States and within 10 years became the leading EPC Contractor in the world for providing secondary Oil Recovery Plants. The Group refocused its efforts to the Middle East in 2011 and builds up and downstream facilities for Major Oil Companies, including waste water treatment plants. It also provides oil field remediation services.

## Patents

- Thermal Desorption Process patent awarded in 1998.
- Sludge to COKER recycling patent awarded in 1992.
- Scalfuel process patent awarded in 1995.
- Scalfuel Product patent awarded in 1996.
- Successful development of fuel oil production process in 2005.



## ABOUT US



### Mission Statement

MCC Petroleum is a leading Construction Contractor providing Services to the Petroleum Industry in the Middle East with focus on Iraq, UAE, Kuwait and Saudi Arabia. The focus of its construction services is mechanical, including shop fabrication and construction of tanks and pipelines. In support of these activities the Company also provides engineering and procurement services including full EPC for small to medium size projects.

With its main office in Dubai and regional offices in Kuwait, Basrah, Dammam and Istanbul and its experienced international staff the company has the capability to perform any project in accordance with international standards.

Our mission is to perform all projects to the complete satisfaction of our customers in term of timing and cost. At the same time we perform our work to the expectation of our international clients with respect to health and safety and security requirements.

## VALUES

### Customer Satisfaction

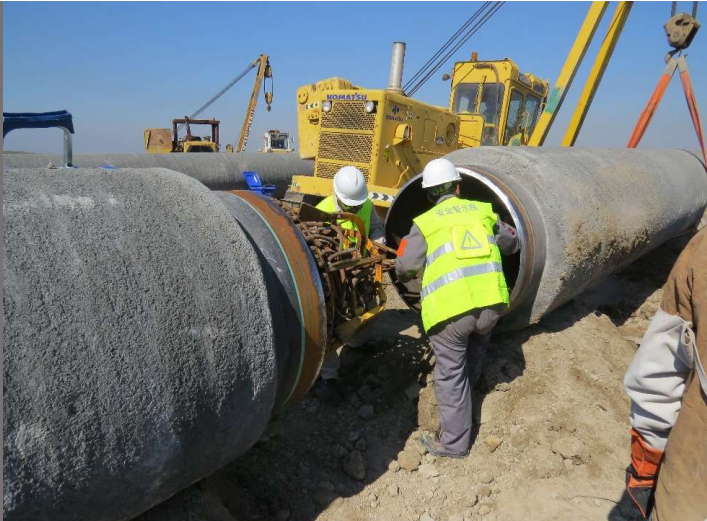
We believe that the key to our success is the customer's satisfaction. We are dedicated to satisfying our customers. We strive to exceed their expectations in HSE and QAQC performance as well as on budget and on time delivery.

### Team Spirit

Our team spirit binds us together, surpassing geographic boundaries. We fully grasp the true meaning of teamwork. We cooperate and empower one another in recognition that our efforts will translate into excellent solutions and services.

### Integrity

We are committed to conduct ourselves in a manner coherent with the utmost standards of behavior including honesty and fairness. We keep our word, deliver on our promises, and recognize our mistakes. Our personal and business behavior ensures that we are a company, worthy of trust.





# CAPABILITIES







## EPC PROCESS

### *Pre construction*

The construction process consists of three distinct phases; Pre-Construction, Construction, and Post Construction. We offer a single source of responsibility for the entire project. The result is streamlined communication which strengthens our relationship with clients, produces quality results and allows to meet client expectations.

The pre-construction phase is one of the most important parts of the construction process. Without proper planning and preparation, we cannot ensure a successful project. The time spent in the front end of a project not only impacts the feasibility & success of the project, but also saves time in the end.

## CONSTRUCTION

---

Once construction begins, we continue to make it easy for the client to keep up with the construction process. We keep the client informed on a regular basis with daily progress reports, weekly project updates and project coordination meetings. We consistently communicate pro-actively with client staff to avoid unnecessary interruptions to the construction process. In addition, we emphasize safety, job site cleanliness and overall job organization. After construction, we provide to the client a complete set of records and documents for the entire project. This will allow for a quick reference for any of the components relating to maintenance or operation of the facility. We will also make a series of warranty or follow-up visits to ensure total client satisfaction





## CONSTRUCTION MANAGEMENT

To deliver a major project on time and on budget while keeping costs and administrative burdens to a minimum the MCC Petroleum Construction management team provides any or all of the following services:

- Design coordination and review
- Value engineering and cost analysis
- Construct ability reviews and assessments
- Construction planning, scheduling and contractor coordination•
- Estimating, purchasing and expediting
- Budgeting and cost control
- Quality assurance
- Contract administration
- Community and agency relations

MCC Petroleum offers CM services in various forms, depending on client preference and project needs. On an «agency» basis, we serve as the owner's representative to optimize cost, time and quality; or we will handle CM on an «at risk» basis, providing a guaranteed maximum price for the cost of construction of the project and taking on the dual role of construction manager and contractor.



# PIPELINE CONSTRUCTION

## CAPABILITIES

- Pipe line 8" - 56"
- Trunk Lines
- Flow lines
- Piping 1" - 8"
- Horizontal Directional Drilling
- Hot Tapping & Stoppling





# TRUNK AND FLOW LINE CONSTRUCTION

## CAPABILITIES

- Pre-construction activities
- Right of way construction
- Trenching
- Stringing
- Bending
- Welding
- Non-destructive testing
- Heat shrinkable sleeves
- Lowering-in
- Backfilling
- Hydrotesting
- Start-up activities
- Valve stations erection
- Open Cut
- Thrust Boring
- Horizontal Directional Drilling
- Cathodic Protection
- Fiber Optic Cable Installation



# TANK CONSTRUCTION

## CAPABILITIES

- Crude storage
- Water storage
- Natural gas storage
- Floating roof
- Fixed roof

## SPECIALIZED SERVICES

- Plate Fabrication
- All related civil works
- Associated piping works







Tank Construction

### *API 650 tanks*

The most common standard used is API 650. API 650 tanks are commonly used for oil, gasoline, chemical and produced water storage. You will find these tanks located all around the world in refineries, terminals, pipelines and production facilities. The API 650 standard governs how tanks are designed, processed, welded, inspected and installed.

### *API 620 tanks*

API 620 is a design standard which governs the design and construction of large welded steel low pressure storage tanks. API 620 storage tanks operate at 250°F or less with an operating pressure more than 2 ½ lbf/in<sup>2</sup> and less than 15 lbf/in<sup>2</sup> gauge.

### *API 12D tanks*

API 12D is a specification for Field Welded Tanks for Storage of Production Liquids. It is the least known of the three standards.

This standard is to field erected tanks as API 12F is to shop built tanks. API 12D predetermined tank dimensions and storage capacities, along with accessories and testing requirements. By creating fixed sizes and requirements, the API 12D has eliminated the need for further engineering, effectively reducing the cost of the tanks.





## CONSTRUCTION OF SPHERICAL TANKS

In the construction of a land-based skirt-supported spherical tank, the tank is partially prefabricated, its bottom polar cup section being produced ready for mounting and stored inside the rest of the spherical shell. In this state, wherein the transportation height of the tank has been substantially reduced, the as yet unfinished spherical tank is transported to the erection site, where the bottom polar cap section is lowered into position and secured to the rest of the spherical shell.

A particular advantage of using spherical tanks as storage tanks is their safety and operational reliability. Very good experience has been gained with such tanks from maritime applications. A special advantage is that extensive insulation is not required between the tank support and the ground, as is the case if large upright cylindrical tanks with flat bottoms are utilized.

During transportation, the prefabricated structure is preferably supported by a temporary support structure in the region which later will become the skirt region. This temporary support structure can be removed when the permanent skirt is constructed at the installation site, or the temporary structure may become part of the permanent skirt.



# TANK FABRICATION

MCC Petroleum is your one-stop resource for all your Tank fabrication needs. It includes plate material procurement as per the code requirement.

MCC Petroleum owns a mechanical fabrication shop with all the required equipment for plate cutting, rolling, beveling and welding.



# TANK FABRICATION

MCC Petroleum is your one-stop resource for all your Tank fabrication needs. It includes plate material procurement as per the code requirement.

MCC Petroleum owns a mechanical fabrication shop with all the required equipment for plate cutting, rolling, beveling and welding.



We build and erect tanks according to API 650, API 620 and API 12D standards.

## PROCESS SKID AND PIPE SPOOL FABRICATION



**MCC Petroleum is your one-stop resource for all your process skid and pipe spool fabricating needs.**

**MCC Petroleum owns a mechanical fabrication shop with all required equipment for process skids and pipe spool fabrication.**

**Skids and spools are fabricated from a number of raw materials i.e. pipes, pipe fittings (e.g. elbows, flanges, tees, etc.), valves, pumps, motors, etc., in our fabrication shop. Raw materials like pipes are cut to the required size and moved with pipe fittings to a fitting table, where some of the components are fitted together. The resulting sub-assembly continues with welding operations before it comes back to the fitting table and gets fitted with other components. Simultaneously the base frame of the skid is fabricated. Afterwards all components are assembled on the base frame.**



# STRUCTURAL STEEL WORKS

## CAPABILITIES

- Structural Steel Supply
- Structural Steel Fabrication
- Structural Steel Installation
- Structural Steel Drafting and Design
- Safe erection
- Works at Heights





# HEAVY EQUIPMENT INSTALLATION



## CAPABILITIES

- Heavy Equipment Lifting
- Heavy Equipment Installation
- Tie-In



# MAJOR COMPLETED PROJECTS



MCC Petroleum Group successfully completed the BGC Project "ZUBAIR IPF & TIE-INS PROJECT" in 2015. Location: BGC Integrated Production Facilities, Basra, Iraq





## MAJOR COMPLETED PROJECTS

In 2013 MCC Petroleum Group was awarded the Lukoil Middle East Project “ENGINEERING, PROCUREMENT AND CONSTRUCTION OF WATER CROSSINGS FOR THE WEST QURNA FIELD (2<sup>ND</sup> PHASE)” 42” OIL PIPELINE FROM CPF MISHRIF TO TUBA TANK FARM, AL HAMMAR HOR CANAL CROSSING (K.P. 61+400) BY OPEN CUT METHOD.

Project was successfully completed in 2014.



**DO YOU KNOW?**  
On present time this is  
the biggest Open Cut  
Method Crossing in  
Iraq.



## MAJOR COMPLETED PROJECTS



In 2014 MCC Petroleum Group successfully completed construction of 21 tanks for 3 ENI crude process facilities.



## MAJOR COMPLETED PROJECTS



In 2016 MCC Petroleum Group successfully completed a dual 48 inch HDD Crossing of Shatt Al Basrah for SCOP.



# PROJECTS REFERENCE LIST

Country	Title	Project Brief	Scop of Work	Client	Project Duration		Contract Value (USD)
					Start	Finish	
Turkey	LPG Storage Tank Project	1900 m3 Sheprical Tank Erection	Subcontractor	Ergaz A.Ş.	2000	2001	5,000,000
Iraq	NaftKhana Pipeline	120 km Crude Oil Pipeline of 12"Dia.- Carbon Steel Type in Rough Topography. From Iran-Iraq Border Passing by Baqouba to Dowra Refinery in Baghdad- IRAQ	EPC	Oil Pipeline Company	2001	2002	2,500,000
	Contract 2						
Iraq	NaftKhana Pipeline	Boring Works-Horizontal Drilling, Casing and Under Laying for All 120 km Pipeline. From Iran-Iraq Border Passing by Baqouba to Dowra Refinery in Baghdad- IRAQ	EPC	Oil Pipeline Company	2001	2002	1,300,000
	Contract 1						
Turkey	Tank Demontage and Erection	Totally 3000 m3 Tank Demontage and Erection Project	EPC	Brigstone Tyre A.Ş.	2002	2003	1,100,000
Turkey	LPG Storage Tank and Piping Project	2500 m3 Spherical Tank Erection & Pump Station & Loading -Unloading System Installation	Subcontractor	Milangaz A.Ş.	2002	2004	7,350,000
Iraq	Rashidiya Pipeline 12" Dia	3 km of 12"Crude Oil Carbon Steel Pipeline	EPC	North Oil Company NOC	2003	2003	450,000
Iraq	Wet Oil Treatment at Bai Hassan South	12 km of Piping Network of Different Sizes 1/2"-32"Dia. Two Units - 105 KBPD	EPC	North Oil Company NOC	2003	2004	4,000,000
	Wet Oil Treatment at Baba Dome	12 km of Piping Network of Different Sizes 1/2"-32"Dia. Three Units - 150 KBPD	EPC	North Oil Company NOC	2004	2005	5,500,000
Iraq	Mussaib Power Plant Station	4 Nos. of 6800 m³ Carbon Steel Diesel Storage Tanks-Floating Roof Type. 2Nos. Demi Raw Water Tanks (Dome Self-Su port Type)	EPC	South East Texas Industrial Services (STIS)	2005	2006	3,000,000
	Diwaniya Depot Extension	7 Nos. of 10000 m³ Carbon Steel Diesel Storage Tanks-Fixed and Floating Roof Type	EPC	Oil Pipeline Company	2005	2006	7,000,000

Country	Title	Project Brief	Scop of Work	Client	Project Duration		Contract Value (USD)
					Start	Finish	
Iraq	Nasiriya Gas Pipeline	Rehabilitation of 100 km Dry Gas Pipeline of 42" dia	EPC	SOC South Oil Company	2006	2007	2,000,000
Iraq	Nasiriya Basra Gas Pipeline	40 km Gas Pipeline of 42" dia	EPC	South Oil Company SOC	2007	2008	12,000,000
Iraq	Kut Depot Extension	2 Nos. of 10000 m³ Gasoline Storage Tanks-Carbon Steel-Floating Roof Type. Piping Network 6", 8" and 12" dia.	EPC	Oil Pipeline Company	2008	2009	4,500,000
	Samawa Refinery	3 Nos. of 2000 m³ Diesel Tanks-Fixed Roof Type	EPC	Samawa Refinery	2008	2009	1,500,000
Turkey	Kırıkkale, Çorum and Samsun Fuel Oil Storage Facilities	Complete Tank Desing,Erection, Pump Station Connection and Loading -Unloading Terminals	EPC	Best Oil A.Ş.	2008	2010	16,000,000
Turkey	Mersin and Körfez Fuel Oil Storage Facilities	Complete Tank Desing,Erection, Pump Station Connection and Loading -Unloading Terminals	EPC	ALPET & ALTINBAŞ PETROLIUM	2009	2011	9,500,000
Turkey	LPG and Fuel Oil Storage Facility	3000 m3 Underground LPG + 35000 m3 Fuel Oil Storage Tanks Engineering and Design Project	EP	Ergaz A.Ş.	2010	2010	285,000
	WS2 Pipeline	24" and 36" Water Pipeline Carbon Steel in Ahdeb Oil Field (20) km	EPC	CNPCC/CPECC	2010	2011	12,000,000
Iraq	Ahdele Oil Field Pipeline Phase 1	B1 of EXL 2 and 3, 72 km Crude Oil Pipeline 10" and 72 km Gas Pipeline 16"	EPC	CNPCC/CPECC	2010	2011	27,000,000
Iraq	Ahdele Oil Field Pipeline Phase 2	B2 of EXL 3 32 km Gas Pipeline 16"	EPC	CNPCC/CPECC	2010	2011	9,000,000
Iraq	48" Hdd Pipeline Crossing Shat Al Arab	7 HDD Crossings, 1200 m Each	EPC	Water Resources Company/NSC	2010	2012	26,000,000
Turkey	Kırıkkale and Çorum Fuel Oil Storage Facilities	Complete Tank Desing,Erection, Pump Station Connection and Loading -Unloading Terminals	EPC	Damlı Oil A.Ş.	2010	2012	11,200,000
Iraq	FSF Pipeline Construction	6" Flow Line and 16" Trunk Line	EPC	CNPCC/CPECC	2011	2012	53,000,000

# PROJECTS REFERENCE LIST

Country	Title	Project Brief	Scop of Work	Client	Project Duration		Contract Value (USD)
					Start	Finish	
Iraq	Petrofac Base	4 Buildings About 700 m2 Area for Each Building	EPC	Petrofac/ Mercury	2011	2012	12,000,000
Iraq	20" Pipeline Construction Majnoon Oil Field	Construction of 30 km 20" Pipeline	EPC	SHELL/CPP	2011	2012	6,000,000
Iraq	Baqouba Gas Pipeline	32" Gas Pipeline from Naft Khana to Mansouriya Power Plant Station (40) km	EPC	IGC	2011	2012	33,000,000
Iraq	Karbala Power Plant Station	8 Fixed Roof Tanks (size 2000 m3) With Two Units and Network	EPC	BETA	2011	2012	4,000,000
Iraq	Diwaniya Power Plant Station	8 Fixed Roof Tanks (size 2500 m3)	EPC	STX	2011	2012	3,500,000
Iraq	Stell Structure	Superstructure (Steel) Pipe Rack Inside CPF	EPC	CNPCC/CPECC	2011	2012	3,600,000
Iraq	Garraf CPF	Cable Trays, Conduit Installation, Wire Pulling, Fire & Gas Detection, Field Instruments, Cathodic Protection, Earthing System, Emergency Communication System, Fiber Optic Networks	EPC	Weatherford, Petronas	2012	2012	12,000,000
Iraq	Bina Bawi CPF	Cable Trays, Conduit Installation, Wire Pulling	EPC	Weatherford, Petronas	2012	2012	6,000,000
Iraq	EPC for 4 Floating Roof Tanks	4x5000 m³ Floating Roof Tanks at Mussaib Power Plant	EPC	Ministry of Electricity	2012	2013	9,000,000
Saudia Arabia	Water Tanks and Water Tower Projects	Complete Tank Desing & Erection	EPC	MNG-LIMAK-MAPA JV	2012	2014	8,900,000
Iraq	104 km 48" Pipeline Construction	104 km 48" Pipeline Construction (E&I Works, OHL, Telecom Systems)	EPC	Tehnnoengineering	2013	2013	30,000,000
Iraq	Water Crossings for The West Qurna Field (2nd Phase)	850 m Water Canal Crossing, 42" Pipe by Open Cut.	EPC	Lukoil Middle East	2013	2014	8,500,000
Iraq	Fao Terminal. Crude Oil Loading Farm	Cable Trays, Conduit Installation, Wire Pulling	EPC	Leighton Offshore / South Oil Company	2014	2014	5,000,000
Iraq	Noor Oilfield Tanks Construction	EPC of 2x5000 m³ Tanks	EPC	Misson Oil Company	2014	x	5,600,000
Iraq	Zubair IPF's & Interconnection Piping	Pipeline Rehabilitation Project included extensive E&I Works	EPC	Basrah Gas Company	2015	x	15,000,000



## EQUIPMENT LIST

- **Pipeline Construction Equipment** – Side Booms, Cranes, Welding Tractors, Excavators, Loaders, Internal and External Clamps, Welding Machines, etc.
- **Tank Construction Equipment** – Cranes, Welding Machines (including Automatic Girth Welders and Welding Tractors), Generators, Sand Blasting and Airless Painting Equipment, etc.
- **Workshop including** – Equipment for Cutting, Grinding, Bending, Overhead Cranes, Sand Blasting, Painting, etc.





## MAJOR CURRENT CLIENTS



## CONTACT DETAILS

Email: [klausg@mccpetroleum.com](mailto:klausg@mccpetroleum.com)  
[www.mccpetroleum.com](http://www.mccpetroleum.com)

### **UAE:**

Al Barsha 2  
Street 48 c - 73  
Dubai, U. A. E.

### **Iraq:**

Al Riyadh District  
La Petite Maison Hotel (Small House)  
Baghdad, Iraq

### **Turkey:**

Yenişehir Mahallesi Dumankaya  
Cadde Blokları D Blok - No: 19  
Pendik-Kurtköy / İSTANBUL -TÜRKİYE

### **Kuwait:**

Fahaheel Makkah Str.  
AL Anood Building 6th floor, Office # 624  
Fahaheel, Kuwait